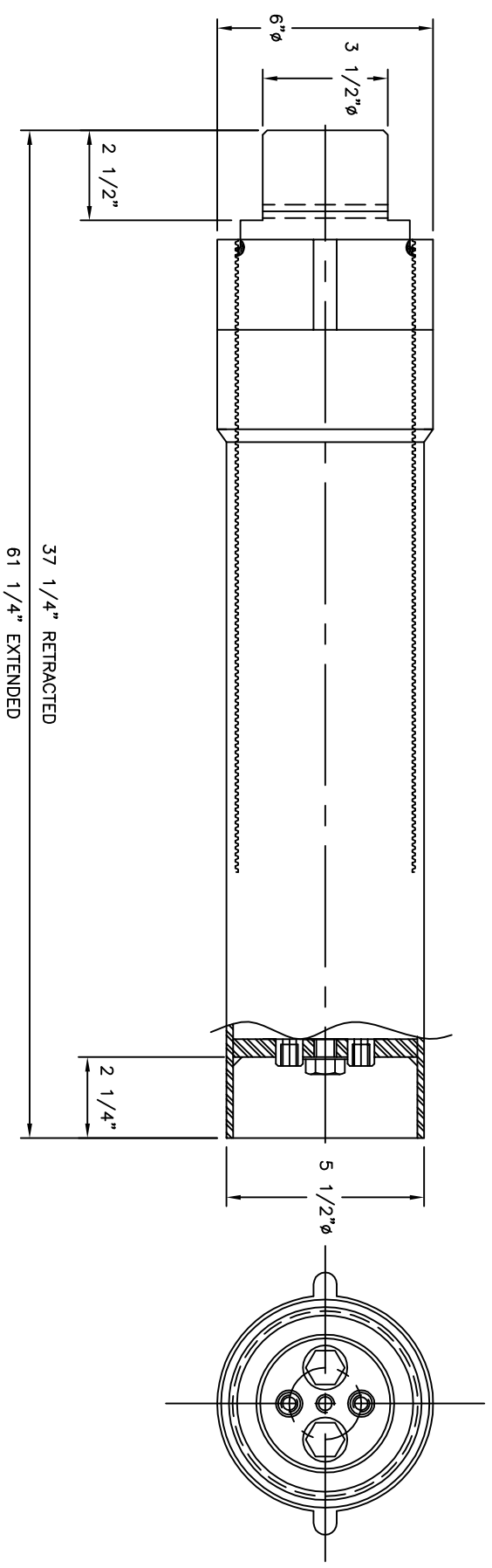


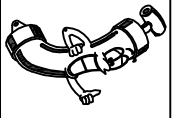
CYLINDER INFORMATION:

1. BORE = 4"ID x 5"OD 4TPI ACME THREAD
2. ROD = 3 1/2"DIA CHROMED
3. STROKE = 24"
4. MAX. WORKING PRESSURE: 3000 PSI
5. PORTS = 1/4"NPT
6. PUSH @ 3000 PSI = 37,699 LBS
7. PULL @ 3000 PSI = 8,835 LBS
8. EST. WEIGHT(EMPTY w/ SLEEVE) = 150 LBS
9. MAX. LOAD IN LOCKED POSITION = 150,325 LBS



JACK & SLEEVE ASSEMBLY

- NOTES:
1. BREAK ALL SHARP EDGES.
 2. ALL DIMENSIONS IN INCHES.



RHK
Hydraulic Services

13111 159 STREET
EDMONTON, AB
T5V 1H6
PH:(780)452-2876
FAX:(780)451-5439
rhkcs@telusplanet.net
www.rhkhydraulics.com

This drawing and the design shown therein is property of RHK HYDRAULICS INC. and use or copies thereof can not be made without written authorization.

UNLESS OTHERWISE NOTED, DIMENSIONS TO BE:
X = ±.030
XX = ±.010
XXX = ±.002
X° = ±2°
X = ±1/16

SJ200 LEVELLING JACK		REV.	DESCRIPTION	DATE
CUSTOMER: STOCK	DWG.# SJ-200			
CUSTOMER P.O.# STOCK	QTY:			
CUSTOMER PART# STOCK	DWN BY: RGB			
W.O.# STOCK	SCALE: N.T.S	DATE RE: JUL 5/01		