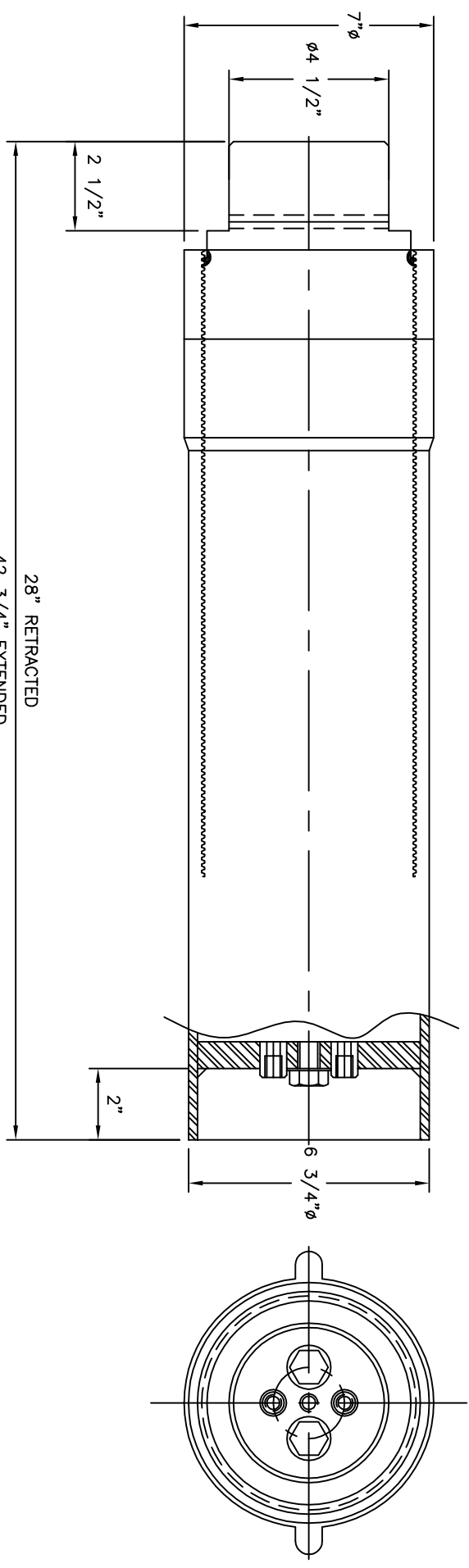
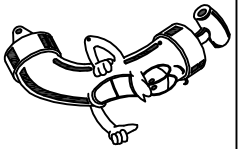


CYLINDER INFORMATION:

1. BORE = 5"ID x 6"OD 4TPI ACME THREAD
2. ROD = 3 1/2"DIA CHROMED
3. STROKE = 14 3/4"
4. MAX. WORKING PRESSURE: 3000 PSI
5. PORTS = 1/4"NPT
6. PUSH @ 3000 PSI = 58,905 LBS
7. PULL @ 3000 PSI = 30,041 LBS
8. EST. WEIGHT(EMPTY w/ SLEEVE) = 174 LBS
9. MAX. LOAD IN LOCKED POSITION = 180,390 LBS



JACK & SLEEVE ASSEMBLY



RHK
Hydraulic Services
MANUFACTURING

13111 159 STREET
 EDMONTON, AB
 T5M 1V9
 PH(780)452-2876
 FAX(780)451-4664
 rhk@rhkhydraulics.com
 www.rhkhydraulics.com

This drawing and the design shown therein is property of RHK HYDRAULICS INC. and use or copies thereof can not be made without written authorization.

UNLESS OTHERWISE NOTED TOLERANCES TO BE:
 .X = ±.030
 .XX = ±.010
 .XXX = ±.002
 X° = ±2°
 X = ±1/16

SJ900 LEVELLING JACK

CUSTOMER: STOCK	DWG.# SJ-900
CUSTOMER P.O.# STOCK	QTY:
CUSTOMER PART# STOCK	DWN BY: R.G.B.
W.O.# STOCK	SCALE: N.T.S.
	DATE RE: JAN.06/00