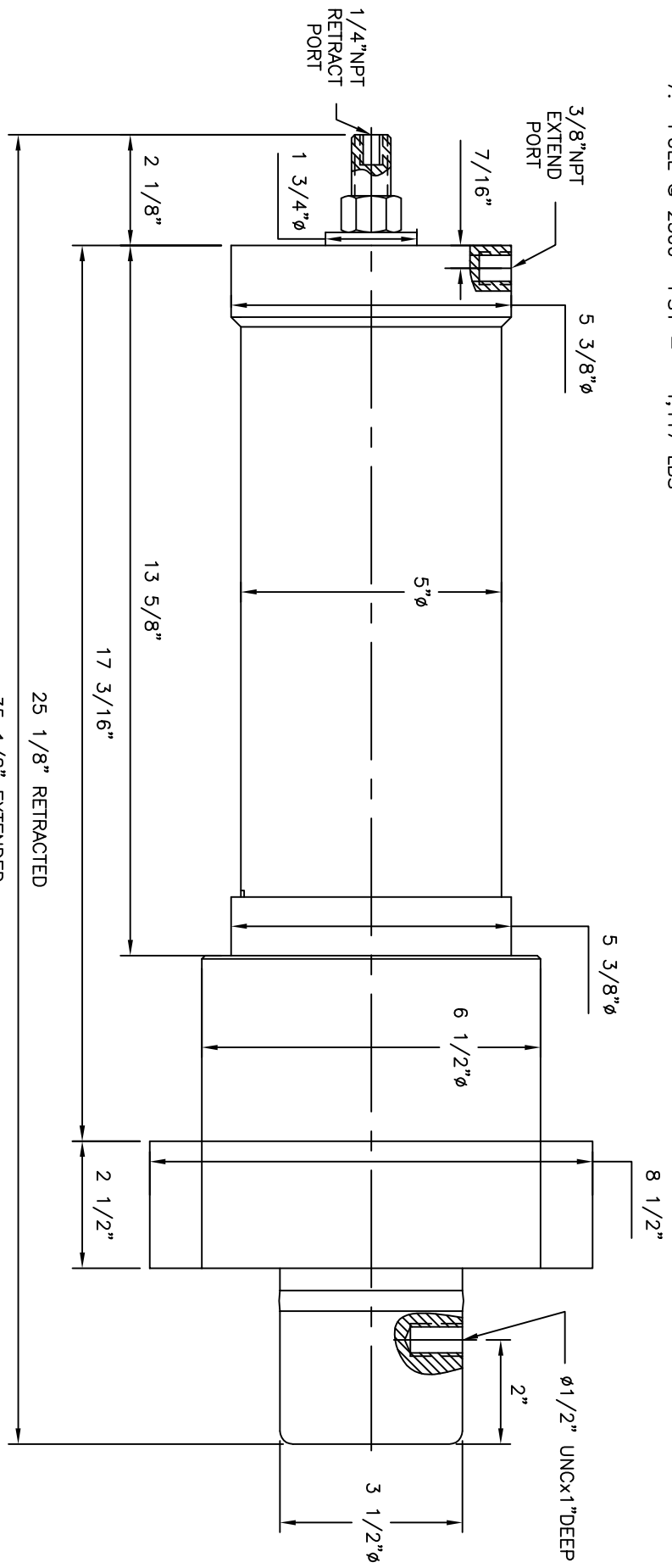
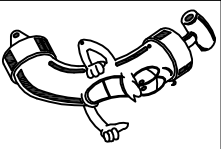


CYLINDER INFORMATION:

1. BORE = 4 1/2" DIA
2. ROD = 3 3/4"-4TPI ACME
3. STROKE = 10"
4. MAX. WORKING PRESSURE: 3000 PSI
5. PORTS = 1/4" NPT, 3/8" NPT
6. PUSH @ 2500 PSI = 39,760 LBS
7. PULL @ 2500 PSI = 4,417 LBS



JACK WITHOUT SLEEVE



RHK
Hydraulic Services
MANUFACTURING

11619 145 STREET
 EDMONTON, AB
 T5M 1V9
 PH(780)414-6410
 FAX(780)451-4664
 rhkhs@telusplanet.net
 www.rhkhydraulics.com

This drawing and the design shown therein is property of RHK HYDRAULICS INC. and use or copies thereof can not be made without written authorization.

UNLESS OTHERWISE NOTED TOLERANCES TO BE:
 .X = ±.030
 .XX = ±.010
 .XXX = ±.002
 X° = ±2°
 X = ±1/16

SJ700 LEVELLING JACK	
CUSTOMER: STOCK	DWG.# SJ-700
CUSTOMER P.O.# STOCK	QTY:
CUSTOMER PART# STOCK	DWN BY: D.J.O.
W.O.# STOCK	SCALE:
	DATE RE: JULY 5/01