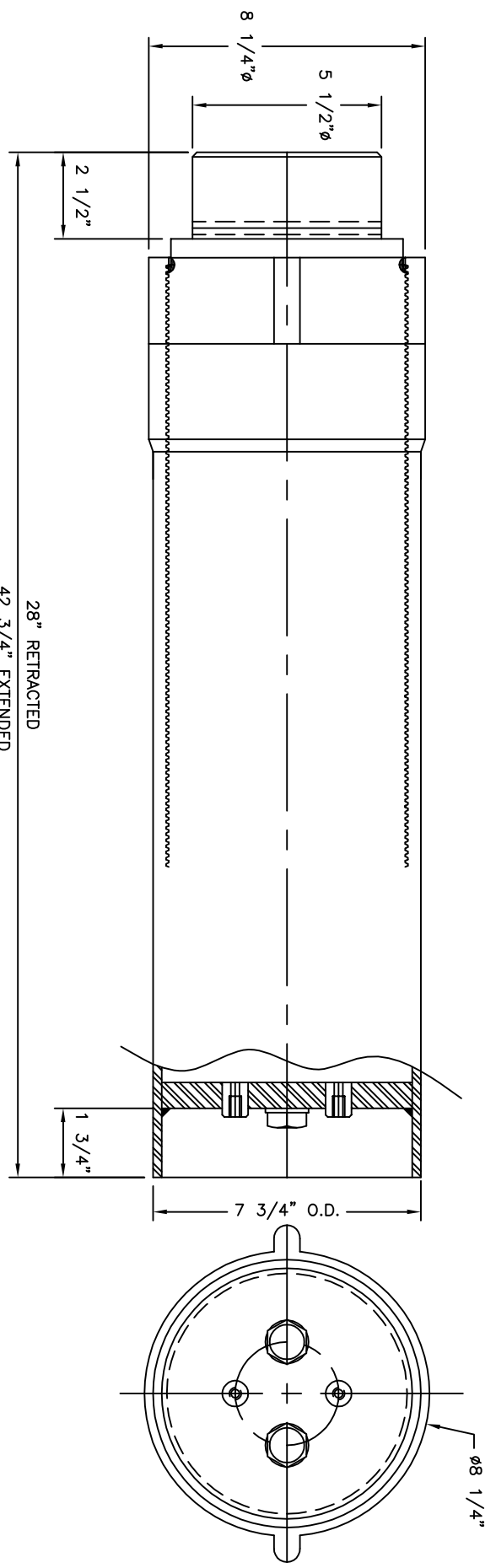


DWG.# SJ-300

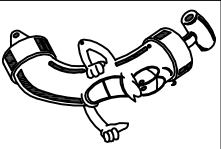
ITEM QTY MATERIAL DESCRIPTION DRG./PART #

CYLINDER INFORMATION:

1. BORE = 6.000" X 7" O.D. - 4TPI ACME
2. ROD = 4 1/2" O.D.
3. STROKE = 14 3/4"
4. MAX. WORKING PRESSURE: 3000 PSI
5. PORTS = 1/4" NPT.
6. PUSH @ 3000 PSI = 84,823 LBS.
7. PULL @ 3000 PSI = 37,110 LBS.
8. EST. WEIGHT EMPTY = 267 LBS.
9. MAX. LOAD IN LOCKED POSITION = 210,450 LBS.



JACK & SLEEVE ASSEMBLY



**RHK**  
Hydraulic Services  
MANUFACTURING

11619 145 STREET  
EDMONTON, AB  
T5M 1V9  
PH(780)414-6410  
FAX(780)451-4664  
rhkhs@telusplanet.net  
www.rhkydraulics.com

This drawing and the design shown therein is property of RHK HYDRAULICS INC. and use or copies thereof can not be made without written authorization.

UNLESS OTHERWISE NOTED TOLERANCES TO BE:  
X = ±.030  
XX = ±.010  
.XXX = ±.002  
X° = ±2°  
X = ±1/16

<b>SJ-300 LEVELLING JACK</b>	
CUSTOMER: STOCK	DWG.# SJ-300
CUSTOMER P.O.# STOCK	QTY:
CUSTOMER PART# STOCK	DWN BY: RGB
W.O.# STOCK	SCALE: NTS
	DATE RE: APR. 20/00